

# World Leader

---

## in Energy Recovery



**Cruise Ship  
Energy Recovery Wheels**

**Cruise Ship Wheels**

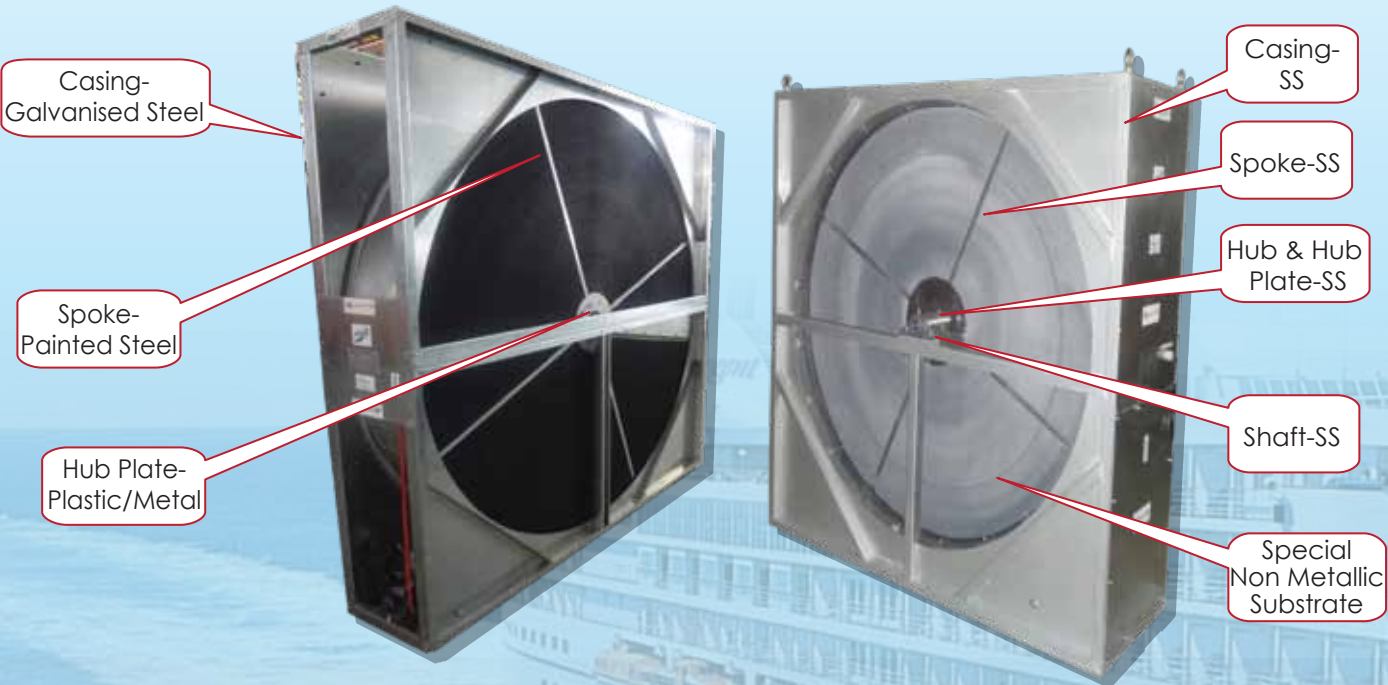




# Cruise Ship Energy Recovery Wheels

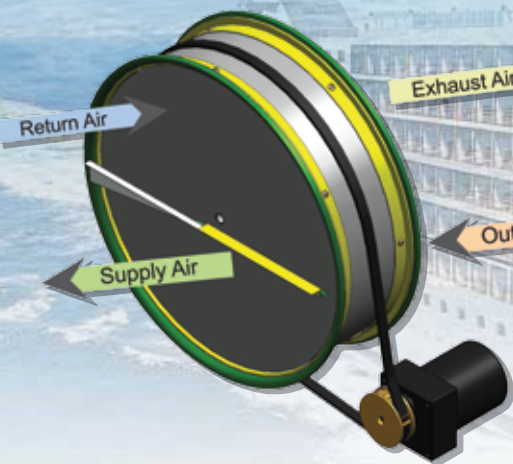
Difference between  
DRI STANDARD WHEEL and CRUISE SHIP WHEEL  
under Model-2200mm

Description	DRI standard Wheel	Cruise Ship Energy Recovery Wheel
Casing	Folded galvanised steel without full side Panel	Frame of SS
Spokes	Powder coated/Painted steel	Stainless steel SS
Hub	Painted steel	Stainless steel
Hub Plate	Plastic/Metal	Stainless steel
Drain Pan	Not provided	Optional
Shaft	Mild steel EN-8	Stainless steel



DRI Standard Wheel

Cruise Ship Wheel



Cruise Ship Wheels

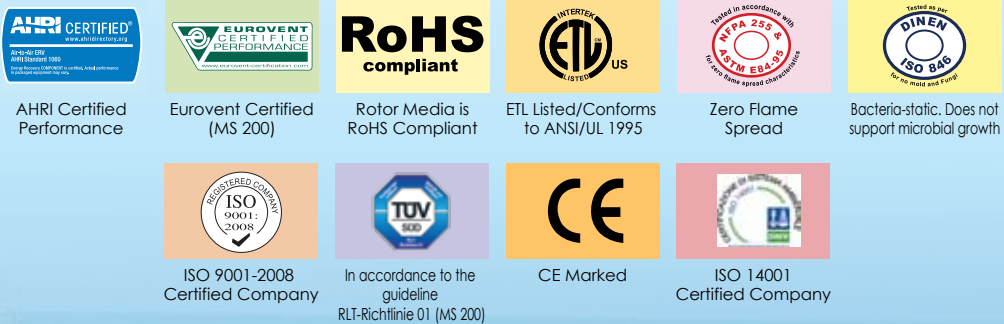
## Fully integrated Manufacturing Plant



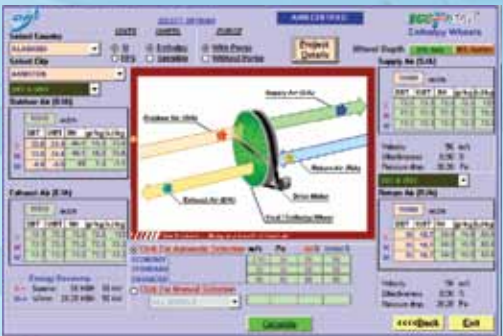
## World's largest installation base

DRI has the world's largest installation base of **Desiccant Coated Wheels**.  
DRI Green building products help to maintain indoor Air Quality (IAQ) requirements and recover energy from exhaust air, resulting in considerable reduction in installed tonnage and utility bills.  
They also assist in enhancing Indoor Air Quality (IAQ), maintaining desired temperature and humidity and increasing productivity.

## Worldwide Recognition



## Worldwide Memberships



## Selection Software Available



DRI has its Airgineers spread out world over  
I USA I Brazil I Europe I Australia I South Africa I UAE I Japan  
I India I China I Korea I Malaysia I Philippines I Thailand



# Worldclass Performance

## Cruise Ship Energy Recovery Wheels



### Indian Offices

**Gurgaon :** 100-101, Udyog Vihar, Phase-IV, Gurgaon 122015, INDIA  
Tel.: +91-124-4188888.  
Fax: +91-124-4188800.  
E-Mail: [drimarketing@pahwa.com](mailto:drimarketing@pahwa.com)

**Mumbai :** 319, T.V. Tower, Industrial Estate, Worli, Mumbai 400025, INDIA  
Tel.: +91-22-24935155.  
Fax: +91-22-24931020.  
E-Mail: [drimumbai@pahwa.com](mailto:drimumbai@pahwa.com)

**Kolkata :** 168, Linton Street Near Linton Post Office, 2<sup>nd</sup> Floor, Kolkata 700014, INDIA  
Tel.: +91-33-64570568.  
: +91-33-22896834.  
E-Mail: [drikolkata@pahwa.com](mailto:drikolkata@pahwa.com)

**Chennai :** New # 5 (old # 20), 2nd Street, E-Block, Anna Nagar-East, Chennai-600102, INDIA  
Tel.: +91-44-42693761. 42693762  
Fax: +91-44-42026406.  
E-Mail: [dri Chennai@pahwa.com](mailto:dri Chennai@pahwa.com)

### International Offices

	Phone	Fax	E-mail	Website
<b>Malaysia</b>	+60-3-77259919	+60-3-77259957	<a href="mailto:bam@bryair.com.my">bam@bryair.com.my</a>	<a href="http://www.bryair.com.my">www.bryair.com.my</a>
<b>China</b>	+86-21-51591555	+86-21-51591559	<a href="mailto:byairsh@bryair.com.cn">byairsh@bryair.com.cn</a>	<a href="http://www.bryair.com.cn">www.bryair.com.cn</a>
<b>Philippines</b>	+632-8078435-37	+632-8078435	<a href="mailto:mail@bryair.com.ph">mail@bryair.com.ph</a>	<a href="http://www.bryair.com.ph/philippines">www.bryair.com.ph/philippines</a>
<b>KOREA</b>	+82-11-86350851		<a href="mailto:drikorea@hanmail.net">drikorea@hanmail.net</a>	<a href="http://www.drikorea.co.kr">www.drikorea.co.kr</a>
<b>BRAZIL</b>	+55-41-9841-3542		<a href="mailto:akumar@pahwa.com">akumar@pahwa.com</a>	<a href="http://www.drirotors.com">www.drirotors.com</a>
<b>S. AFRICA</b>	+27-31-2027829	+27-31-2027849	<a href="mailto:drimarketing@pahwa.com">drimarketing@pahwa.com</a>	<a href="http://www.bryair.com/afrika">www.bryair.com/afrika</a>
<b>UAE</b>	+971-6-5578148	+971-6-5578149	<a href="mailto:enquire@dri.ae">enquire@dri.ae</a>	<a href="http://www.drirotors.com">www.drirotors.com</a>
<b>USA</b>	+ (540) 266-7643	+1-703-890 9465	<a href="mailto:mglark@driamerica.com">mglark@driamerica.com</a>	<a href="http://www.driamerica.com">www.driamerica.com</a>
<b>INDONESIA</b>	+62-21-79199023	+62-21-79199509	<a href="mailto:indonesia@bryair.com.my">indonesia@bryair.com.my</a>	<a href="http://www.bryair.com/my/indonesia">www.bryair.com/my/indonesia</a>
<b>VIETNAM</b>	+84-8-39956498	+84-8-39956497	<a href="mailto:vietnam@bryair.com.my">vietnam@bryair.com.my</a>	<a href="http://www.bryair.com.my/vietnam">www.bryair.com.my/vietnam</a>